

The logo for EXPANDEO features a stylized globe composed of two overlapping, leaf-like shapes in shades of blue and teal. The word "EXPANDEO" is written in a bold, white, sans-serif font across the center of the globe.

EXPANDEO

#WHERETHEMARKETMEETS

A satellite-style map of a coastal region, showing a mix of green fields, urban areas, and blue water bodies. The map is positioned on the left side of the slide, partially overlapping a dark blue background that features a faint map of Europe.

UNLOCKING THE FULL POTENTIAL OF EO IN THE EUROPEAN POLICIES



GIUSEPPE OTTAVIANELLI
Head of Earth Observation Application Section
ESA

The EARSC logo is circular, with the acronym "EARSC" in blue. Below it, in smaller text, are the words "European Association of Remote Sensing Companies". The logo also features several small white stars.

EARSC
European Association of Remote Sensing Companies

Unlocking the Full Potential of EO for the EU Green Deal



Giuseppe Ottavianelli
Head of the Applications Section
Science, Applications and Climate Department
Directorate of Earth Observation Programmes

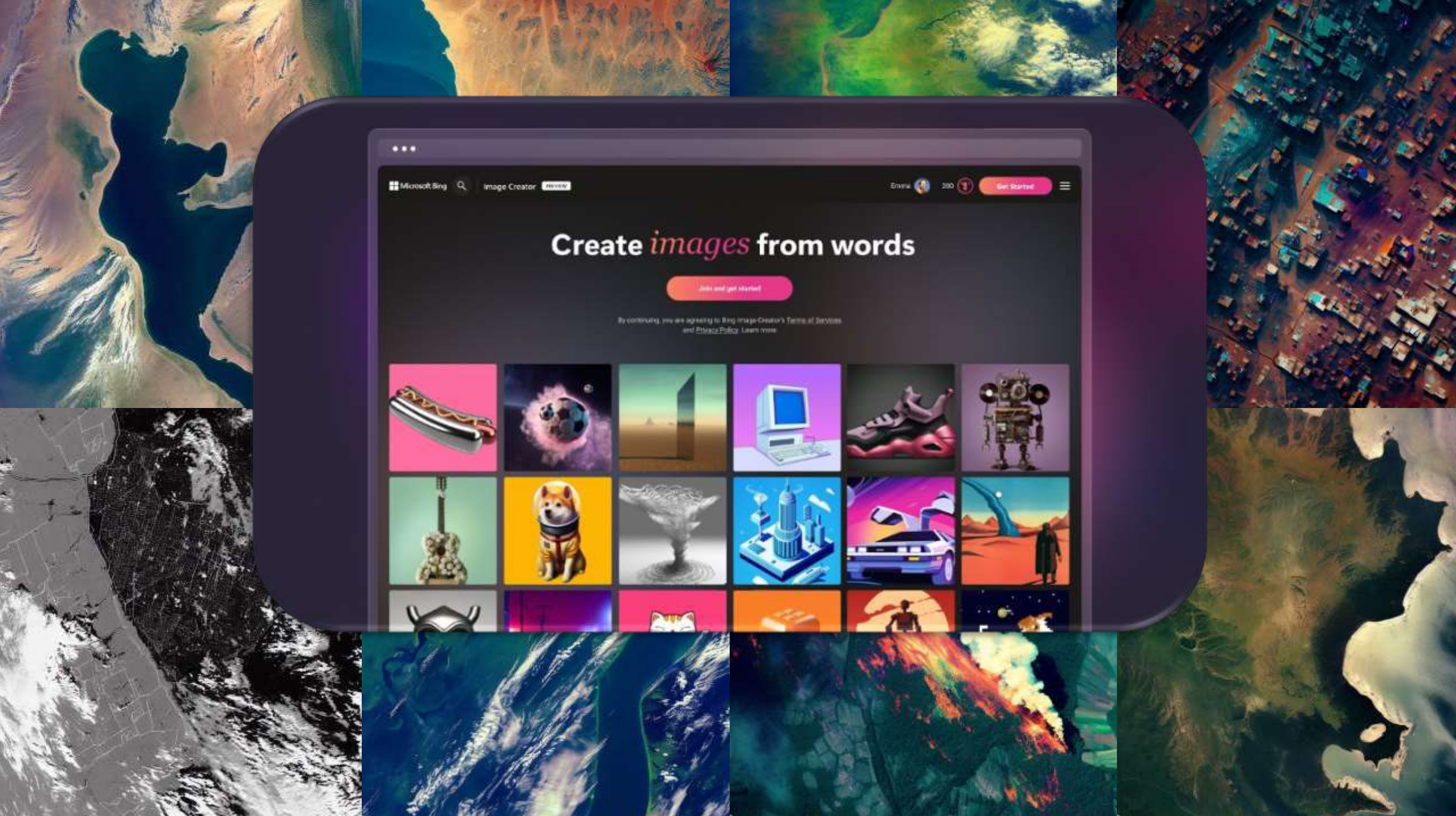
EXPANDEO
Brussels, Belgium
13/06/2023

ESA UNCLASSIFIED – For ESA Official Use Only



Legislative acceptance





⋮

Microsoft Bing Image Creator

Enrol 300 ☰

Create *images* from words

By continuing, you are agreeing to Bing Image Creator's [Terms of Services](#) and [Privacy Policy](#). [Learn more](#)



Strengthening trust with clients



Natural language
processing

BigData for multi-
mission applications

Edge computing

Digital Twin Earth
modelling

New virtual
reality solutions

High performance
computing and
quantum computing

Cloudification

Fusion with non-EO data

Drones, Internet of things, Gamification

Scale of the applicability <> Customization of the solution

Innovation

Certification



Harmonization

Open science / Open innovation

Synergy



FT FINANCIAL
TIMES

FT LIVE

INVESTING IN SPACE



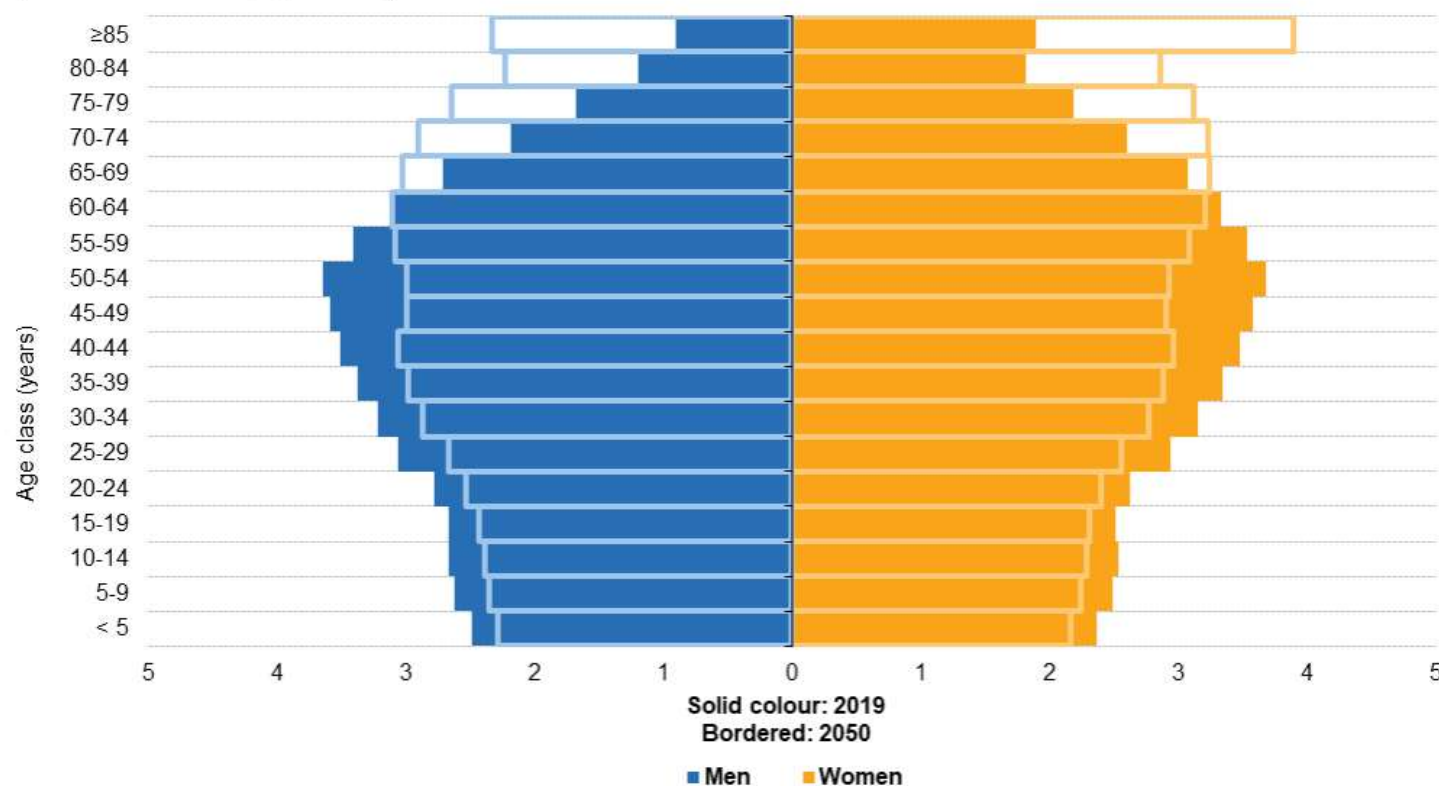
THE 1st EO COMMERCIALISATION FORUM

30-31 OCTOBER 2023
ESA-HQ | PARIS

Investing in Industrial Innovation

Population pyramids, EU-27, 2019 and 2050

(% share of total population)



Note: all data as of 1 January. 2019: estimates and provisional. 2050: population according to the 2019 projections, baseline variant (EUROPOP2019).

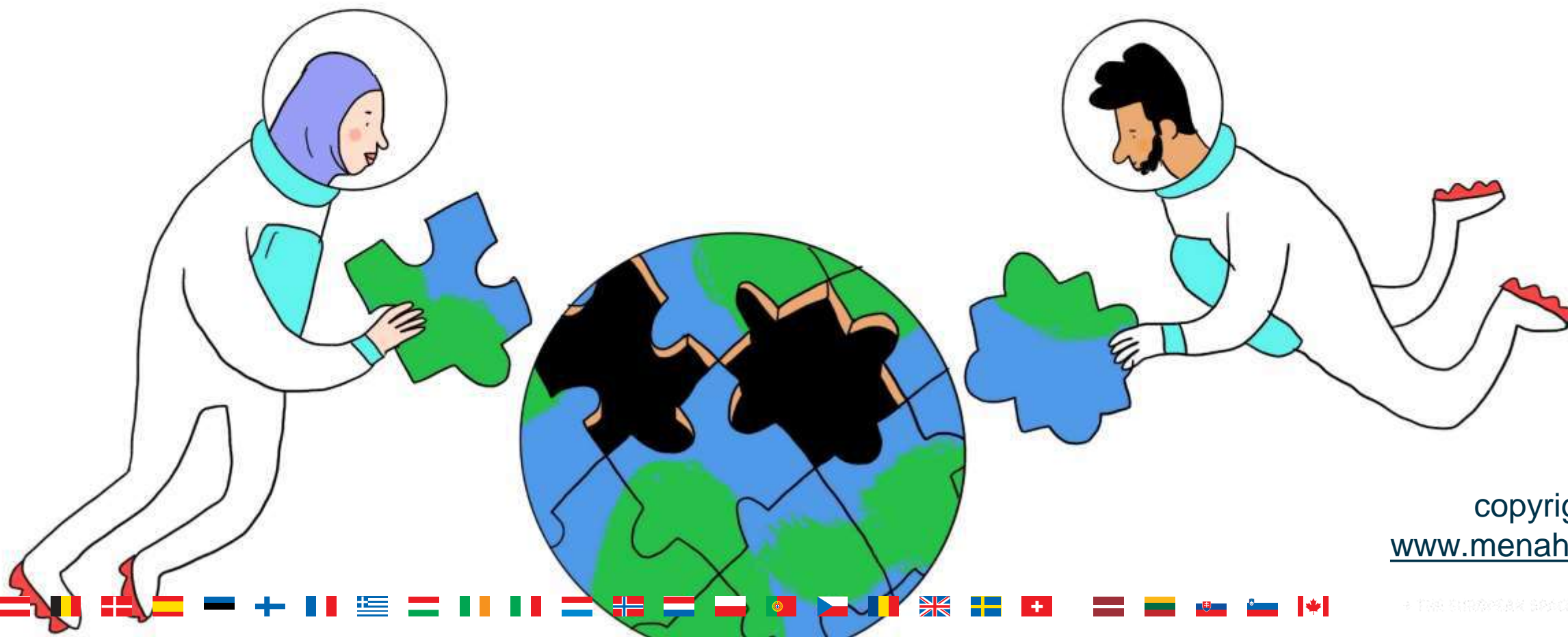
Source: Eurostat (online data codes: demo_pjangroup and proj_19np)

eurostat

Capacity of workforce

A common societal good

Space is not about space.
Space is about providing solutions.



copyright
www.menah.nt

13





EO for Carbon Markets 2023

3-5 October 2023 – ESA ESRIN

WORLD EMISSION

WELCOME TO WORLD EMISSION

SELECT A SPATIAL

CO ₂	CH ₄	NO _x	SO ₂
Global Emissions	Global Emissions	Global Emissions	Global Emissions
NO _x	CO	PM _{2.5}	PM ₁₀
Global Emissions	Global Emissions	Global Emissions	Global Emissions

2023-10-03

THE EUROPEAN SPACE AGENCY

GTIF | Green Transition Information Factory

GTIF

Green Transition Information Factory

A great journey ahead

